



DEVELOPERS
ARCHITECTS
LAND USE COUNSEL
CIVIL ENGINEER
LANDSCAPE ARCHITECT
TRAFFIC CONSULTANT

GROSVENOR
BRININSTOOL + LYNCH, SHOP
HOLLAND & KNIGHT
BOHLER
SCAPE
GOROVE-SLADE

MARKET TERMINAL: BUILDING A-2

LOT 840 IN RECORD LOT 6 IN SQUARE 3587

2ND STAGE PUD APPLICATION | 3.1.19

ZONING COMMISSION
District of Columbia
CASE NO.15-27A
EXHIBIT NO.4B1

MARKET TERMINAL: 2ND STAGE PUD

INTRODUCTION

- 101 HISTORICAL IMAGES
- 102 EXISTING BIRD'S EYE VIEW: LOT 6
- 103 EXISTING VIEWS
- 104 DC COMPREHENSIVE SITE PLAN / FUTURE LAND USE MAP
- 105 EXISTING AND PROPOSED PUDS
- 106 OVERALL USE DIAGRAM

SITE ANALYSIS

- 201 ZONING DIAGRAM
- 202 SITE ANALYSIS

BUILDING A-2

BUILDING A-2: ZONING & SITE INFORMATION

- A-2_101 CONTEXT IMAGES
- A-2_102 PRIMARY SITE CIRCULATION
- A-2_103 ZONING TABULATIONS

BUILDING A-2: ARCHITECTURAL PRECEDENTS & RENDERINGS

- A-2_201 VIEW FROM NEAL PLACE
- A-2_202 DESIGN CONCEPT
- A-2_203 FACADE A PRECEDENT
- A-2_204 FACADE B PRECEDENT
- A-2_205 VIEW FROM NEAL PLACE
- A-2_206 VIEW FROM NEAL PLACE - EVENING
- A-2_207 VIEW FROM 3RD ST.
- A-2_208 VIEW FROM NY AVE
- A-2_209 VIEW FROM NY AVE
- A-2_210 CANOPY PRECEDENT
- A-2_211 ARCHITECTURAL FEATURE WALL

BUILDING A-2: ARCHITECTURAL PLANS, SECTIONS & ELEVATIONS

- A-2_301 PLAN - GARAGE LEVEL 2
- A-2_302 PLAN - GARAGE LEVEL 1
- A-2_303 PLAN - GROUND FLOOR
- A-2_304 PLAN - SECOND FLOOR
- A-2_305 PLAN - THIRD FLOOR
- A-2_306 PLAN - TYPICAL FLOOR
- A-2_307 PLAN - THIRTEENTH FLOOR
- A-2_308 PLAN - PENTHOUSE
- A-2_309 PLAN - ROOF
- A-2_310 IZ UNIT LOCATIONS (APPROX)
- A-2_311 SECTION A-A
- A-2_312 SECTION B-B
- A-2_313 ENLARGED SECTION C-C
- A-2_314 ENLARGED SECTION D-D
- A-2_315 ENLARGED SECTION E-E
- A-2_316 ENLARGED SECTION F-F
- A-2_317 ELEVATION A
- A-2_318 ELEVATION B
- A-2_319 ELEVATION C
- A-2_320 ELEVATION D
- A-2_321 FACADE A
- A-2_322 FACADE B
- A-2_323 MATERIAL INSPIRATION

BUILDING A-2: SIGNAGE

- A-2_401 PRECEDENT SIGNAGE
- A-2_402 PRECEDENT SIGNAGE
- A-2_403 SIGNAGE PLAN
- A-2_404 SIGNAGE PLAN
- A-2_405 SIGNAGE PLAN
- A-2_406 SIGNAGE PLAN

BUILDING A-2: LANDSCAPE

- A-2_501 BUILDING A2 ROOF SPACES
- A-2_502 BUILDING A2 GROUND FLOOR
- A-2_503 RESIDENTIAL COURTYARD ILLUSTRATIVE PLAN AND PRECEDENT IMAGES
- A-2_504 RESIDENTIAL COURTYARD - PRECEDENT IMAGES
- A-2_505 TERRACE
- A-2_506 TERRACE PRECEDENT IMAGES
- A-2_507 APPROVED VS PROPOSED
- A-2_508 DESIGN GOALS
- A-2_509 PRECEDENT IMAGES
- A-2_510 GREAT FALLS PARK SCHEME
- A-2_511 PROGRAM DIAGRAM
- A-2_512 ILLUSTRATIVE PLAN
- A-2_513 CIRCULATION
- A-2_514 NEAL PLACE PARK
- A-2_515 PARK SECTION 1
- A-2_516 PARK SECTION 2
- A-2_517 PUBLIC SPACE/ ACTIVATION
- A-2_518 PUBLIC SPACE/ ACTIVATION
- A-2_519 PUBLIC SPACE/ ACTIVATION
- A-2_520 PUBLIC SPACE/ ACTIVATION
- A-2_521 PUBLIC SPACE/ ACTIVATION
- A-2_522 PUBLIC SPACE/ ACTIVATION
- A-2_523 STREETScape SECTION 1
- A-2_524 STREETScape SECTION 2
- A-2_525 STREETScape SECTION 3
- A-2_526 PLANTING - POTENTIAL CANOPY SPECIES
- A-2_527 PLANTING - UNDERSTORY PRECEDENT IMAGES
- A-2_528 FALLS WALK
- A-2_529 FALLS WALK - EVENING
- A-2_530 RETAIL EDGE
- A-2_531 VIEW DOWN NEAL PLACE

BUILDING A-2: LEED & GREEN AREA RATIO CALCULATIONS

- A-2_601 LEED 2009 PROJECT CHECKLIST
- A-2_602 GAR CALCULATIONS

CIVIL

- C-100 GENERAL NOTES AND LEGEND
- C-101 EXISTING CONDITIONS / DEMOLITION PLAN
- C-201 SITE PLAN - STAGE II PUD
- C-202 SIGNAGE AND STRIPING PLAN
- C-300 UTILITY PLAN
- C-301 DC WATER EASEMENT EXHIBIT
- C-400 EROSION AND SEDIMENT CONTROL PLAN (PHASE I)
- C-401 EROSION AND SEDIMENT CONTROL PLAN (PHASE II)
- C-500 STORMWATER MANAGEMENT PLAN - OVERALL
- C-501 STORMWATER MANAGEMENT PLAN CALCULATIONS - OVERALL
- C-502 STORMWATER MANAGEMENT PLAN CALCULATIONS - OVERALL

INTRODUCTION

MARCH 1, 2019



Panoramic Photograph, 1918



1951



1957



1964



1980



Aerial Photograph, Union Station Turntable, 1977



Aerial Photograph, Ivy City Roundhouse, 1977

UNION TERMINAL MARKET

Established 1931

Located 1 1/2 miles Northeast of the Capitol

5th and Florida Ave., N. E.

New York Ave. (Route 1) at Penn St., N. E.

No. 92 Street Car Line on Florida Ave.

FLORIDA AVENUE AT 5th STREET, N. E.

NEW YORK AT PENN STREETS, WASHINGTON, D. C.

Know Your Market

Know Your Supplier

Better Marketing Makes BETTER SALES

Shop in Person Regularly

See the . . .

QUALITY - QUANTITY VARIETY

of Choice - Fancy Staple - Unusual FOODS

FROM ALL OVER THE WORLD Available in

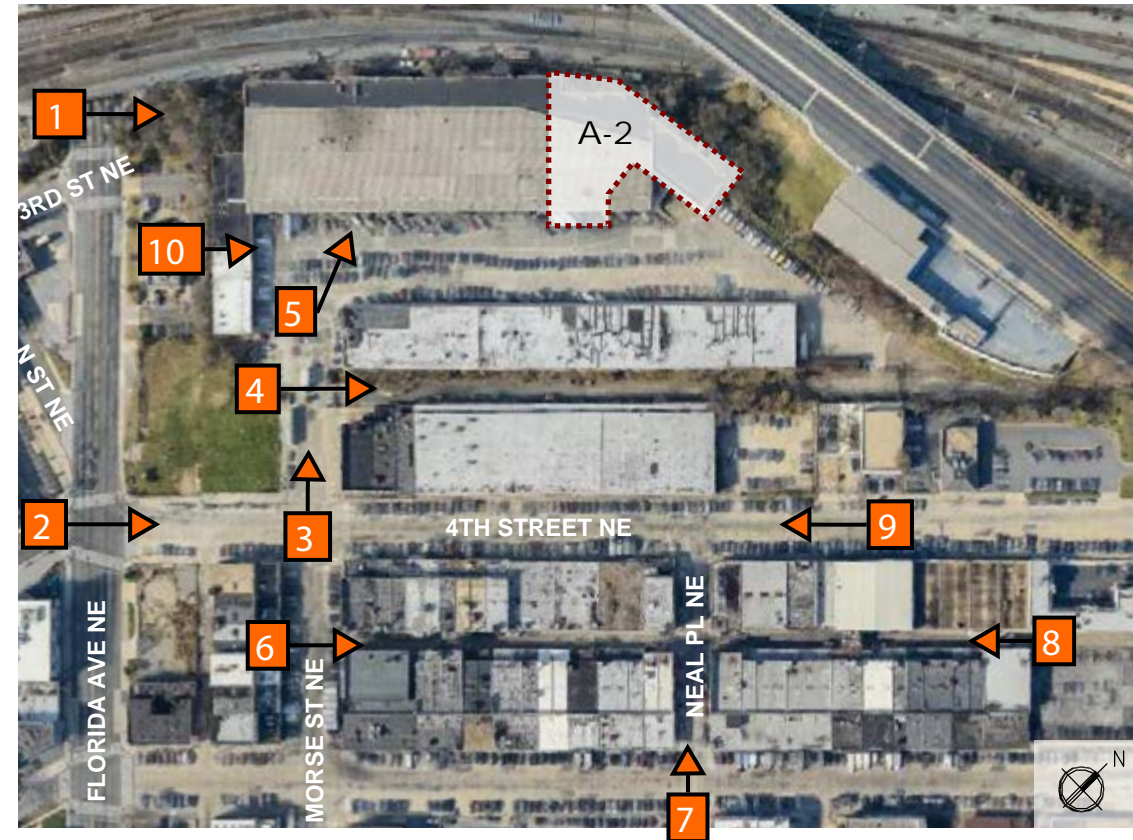
UNION TERMINAL MARKET

Increase Your Variety . . . Increase Your Business

UNION TERMINAL MARKET MERCHANTS

A Distributor To Serve You Regardless of Your Requirements





KEY PLAN



EXISTING VIEWS

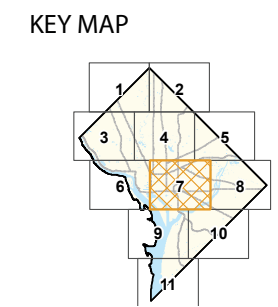
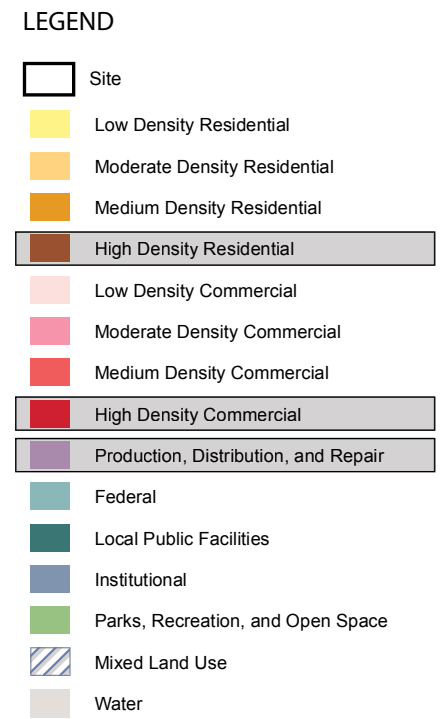
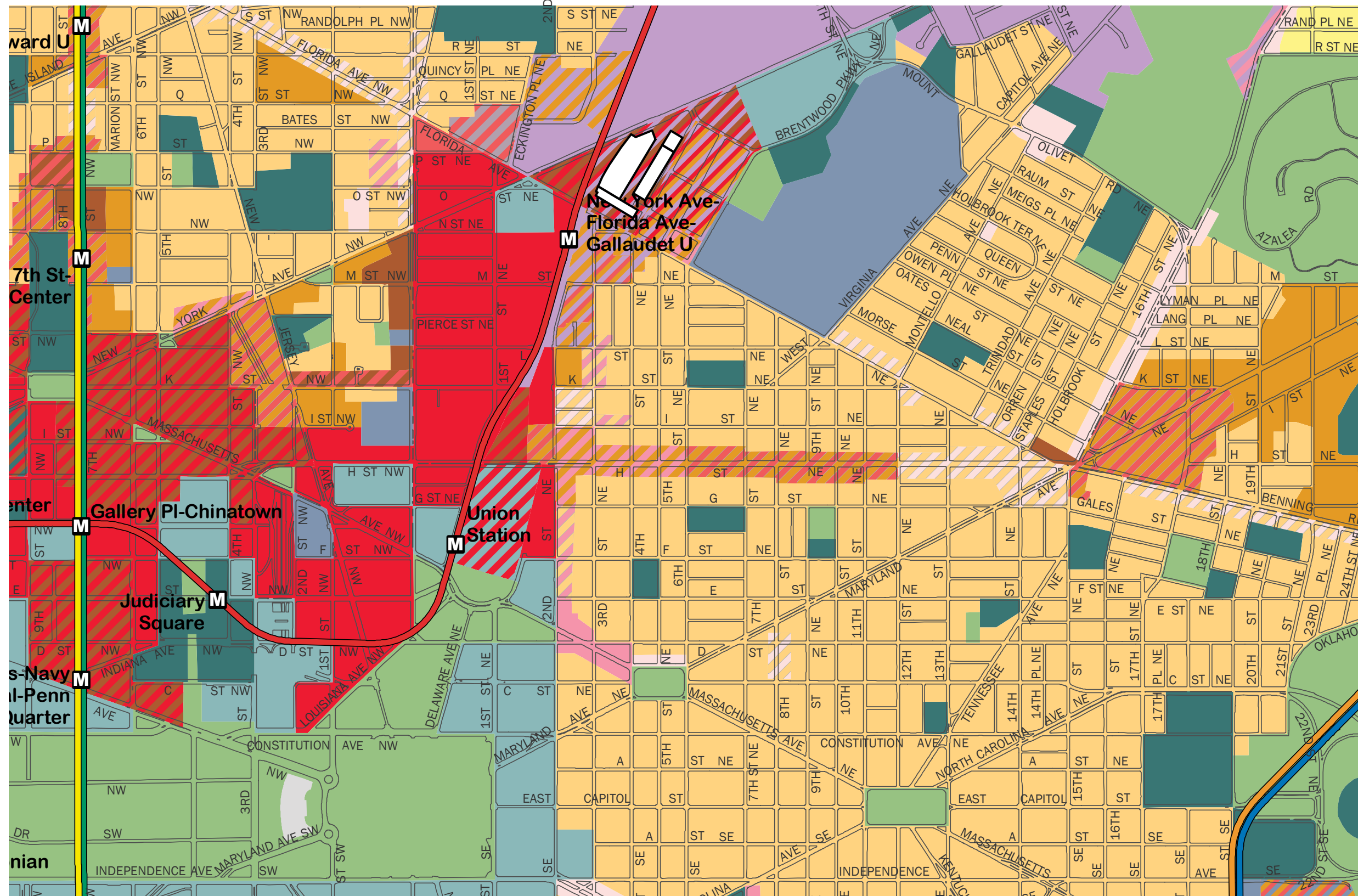
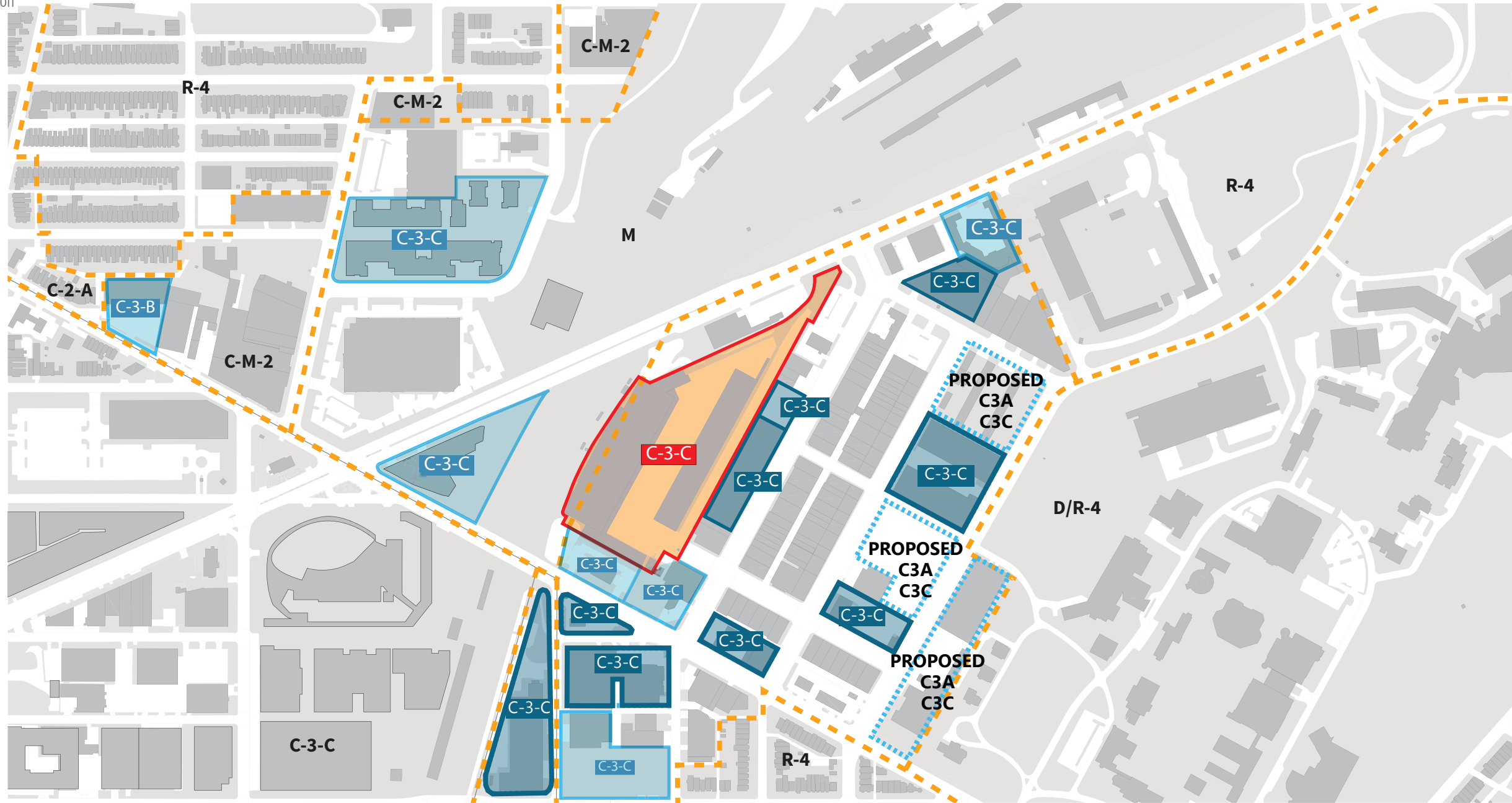
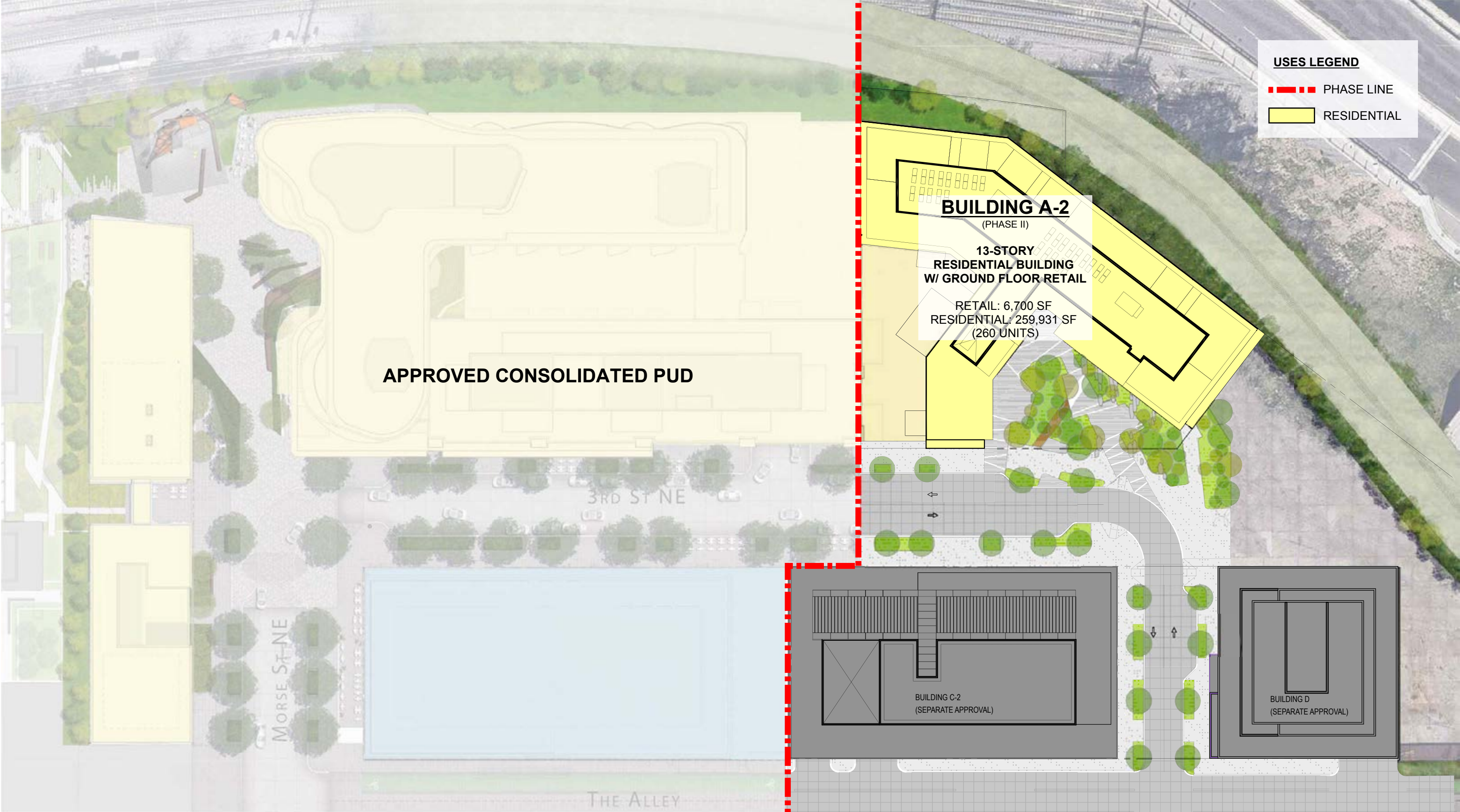


DIAGRAM KEY

- PUD Site
- Approved Zoning
- Zoning Boundary
- Adjacent Approved PUD
- Adjacent Approved PUD since Previous Submission
- Adjacent Proposed PUD





USES LEGEND

- - - PHASE LINE
- RESIDENTIAL

APPROVED CONSOLIDATED PUD

BUILDING A-2
(PHASE II)
**13-STORY
RESIDENTIAL BUILDING
W/ GROUND FLOOR RETAIL**
RETAIL: 6,700 SF
RESIDENTIAL: 259,931 SF
(260 UNITS)

BUILDING C-2
(SEPARATE APPROVAL)

BUILDING D
(SEPARATE APPROVAL)

MARCH 1, 2019

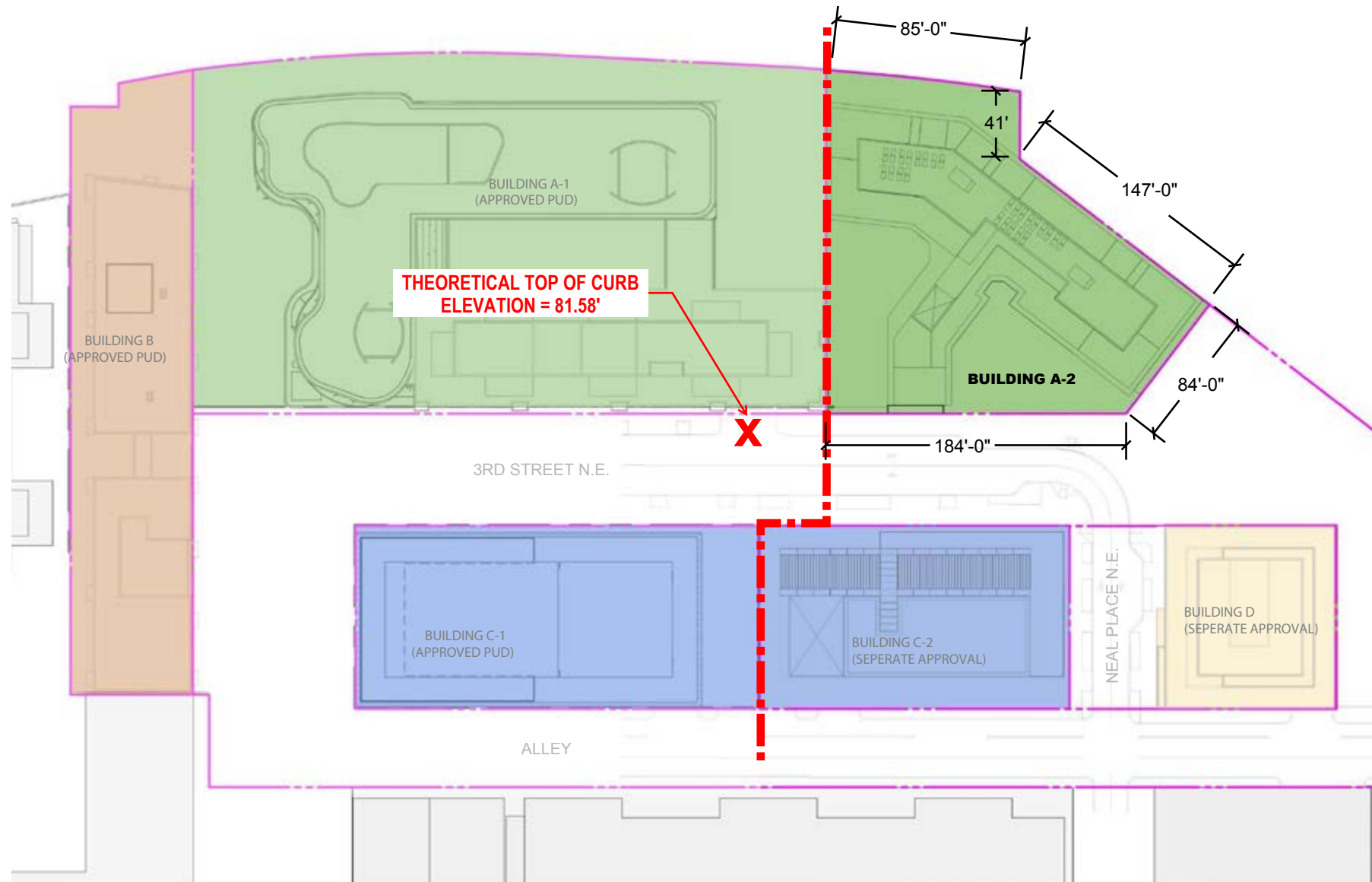
OVERALL USE DIAGRAM



106

SITE ANALYSIS

MARCH 1, 2019



LEGEND

 THEORETICAL LOT A	 A&T LOT LINE
 THEORETICAL LOT B	 PHASE LINE
 THEORETICAL LOT C	X MEASURING POINT
 THEORETICAL LOT D	

THEORETICAL LOT A	120,000.00	SF
THEORETICAL LOT B	27,845.00	SF
THEORETICAL LOT C	49,066.00	SF
THEORETICAL LOT D	18,339.00	SF
TOTAL	215,250.00	SF

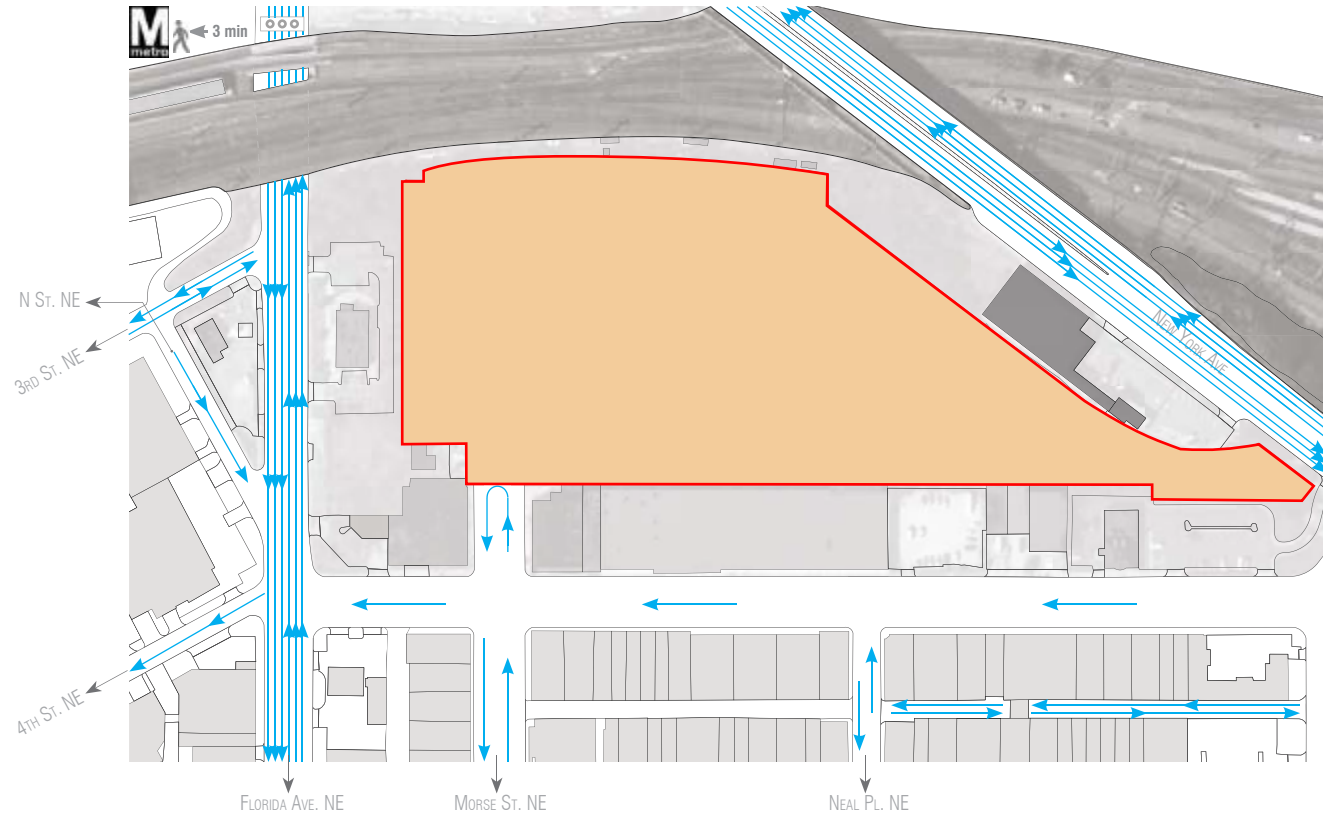
NOTE:
EXISTING LOT 6 HAS BEEN DIVIDED INTO THEORETICAL LOTS TO SHOW REARYARD/ COURTYARD REQUIREMENTS FOR ZONING.

BUILDINGS A-1 & A-2 AND C-1 & C-2 ARE ONE BUILDING FOR ZONING PURPOSES.

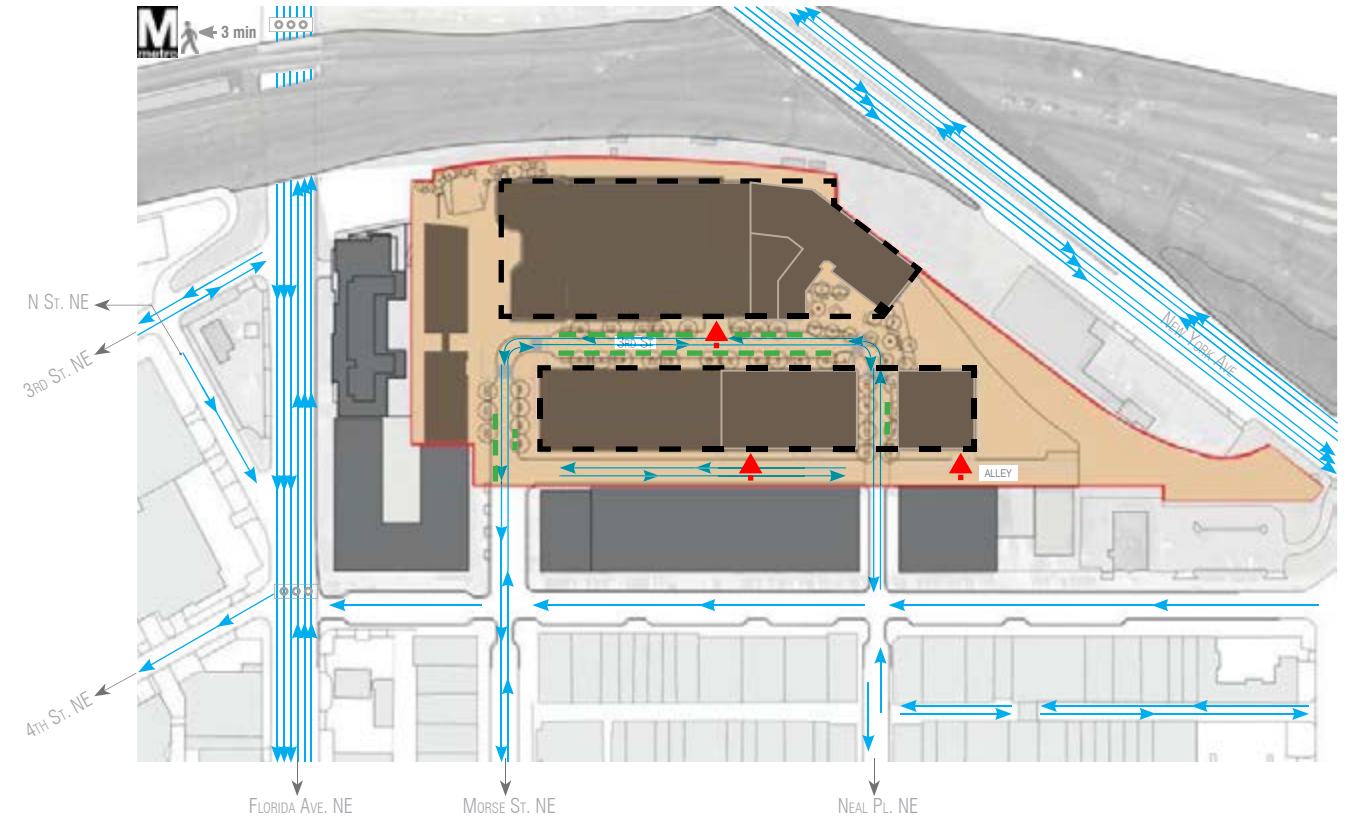


DIAGRAM KEY

- PUD Site
- ⇄ Vehicular Traffic
- ▶ Loading Entrance
- ○ ○ Traffic Signal
- Below Grade Parking
- Above Grade Parking
- NoMA / Gallaudet Metro Station
- Above Grade Parking

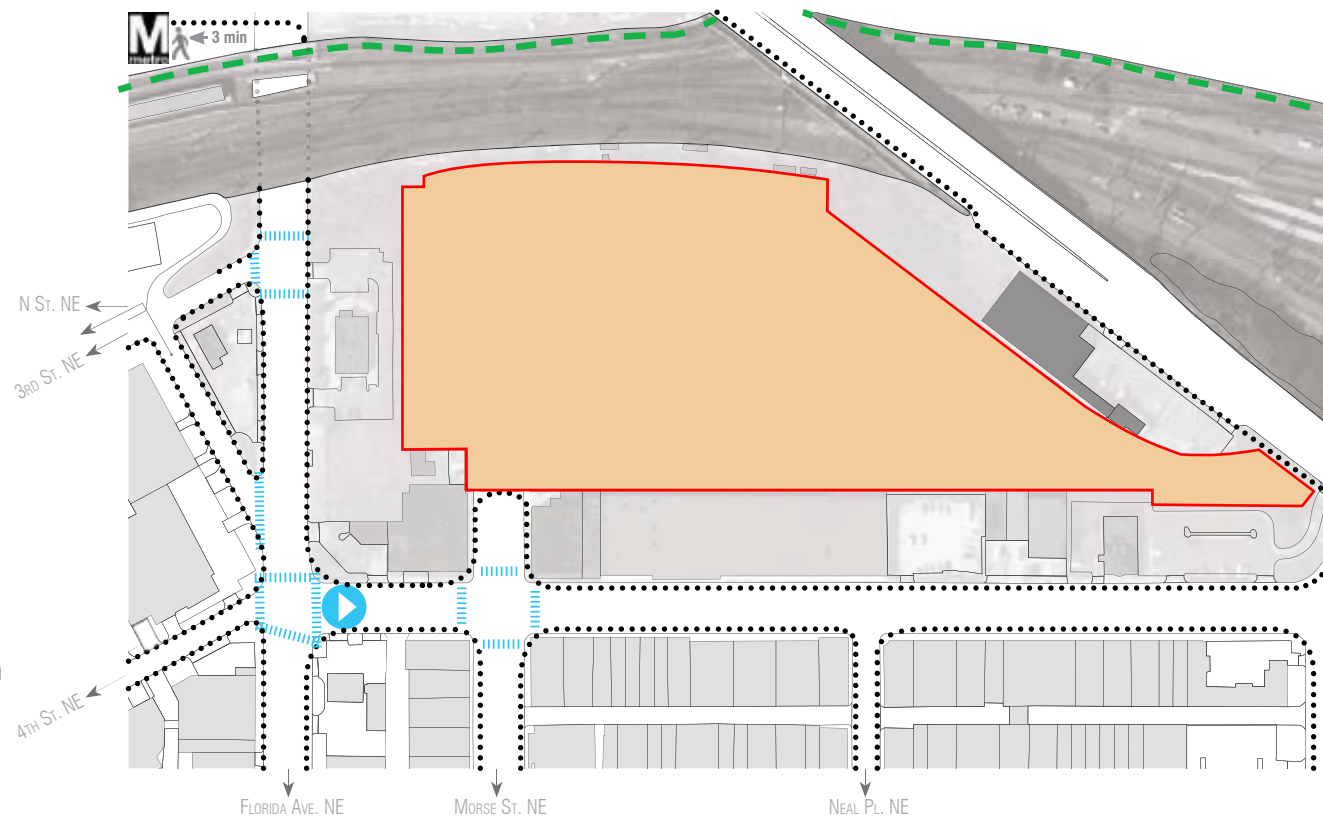


EXISTING: VEHICULAR CIRCULATION

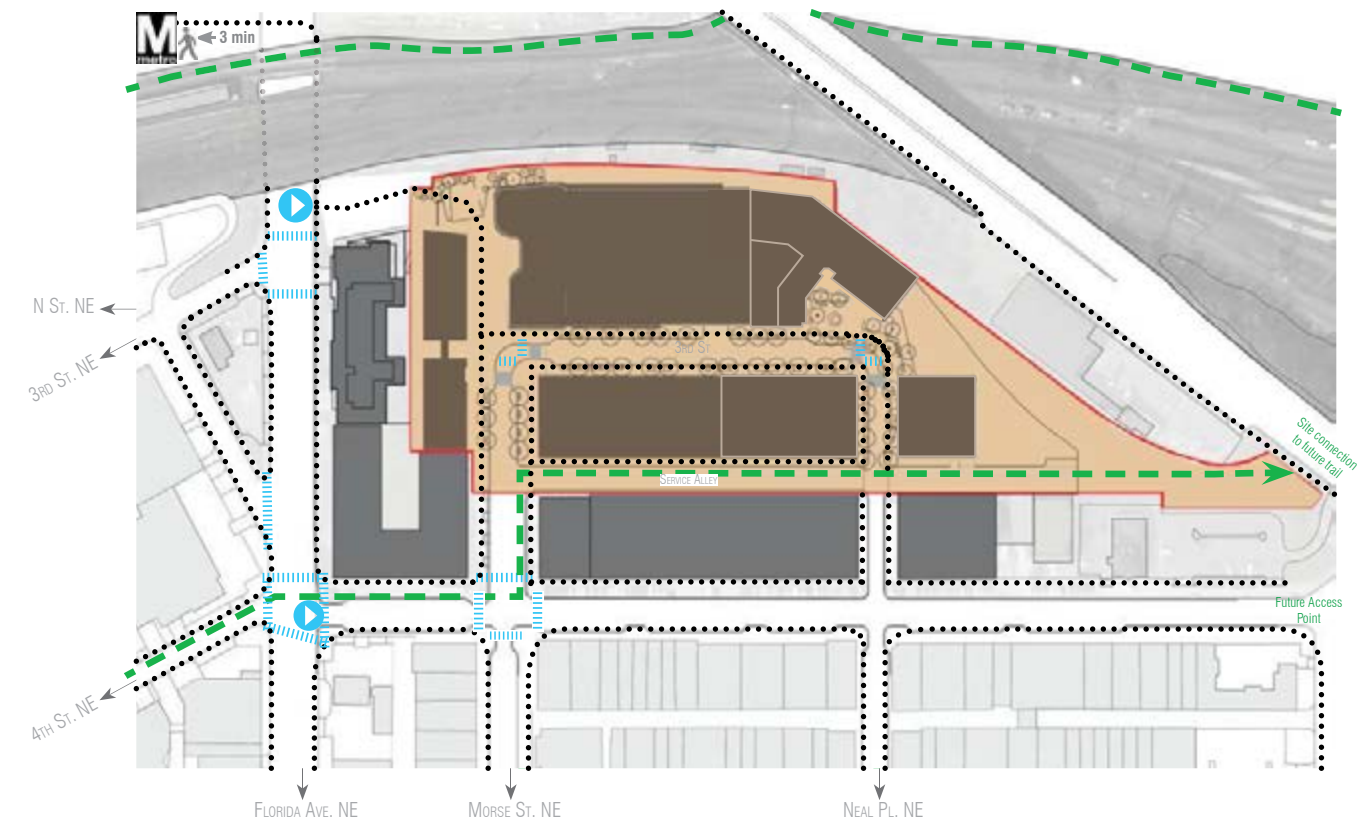


PROPOSED: VEHICULAR CIRCULATION

- PUD Site
- ▶ Pedestrian Entry
- Pedestrian Circulation
- Bicycle Circulation
- Pedestrian Cross walk
- NoMA / Gallaudet Metro Station



EXISTING: PEDESTRIAN/ BICYCLE CIRCULATION



PROPOSED: PEDESTRIAN/ BICYCLE CIRCULATION

SITE ANALYSIS

MARCH 1, 2019



202